

## GSM-SWITCH Programmer User Guide

### Note:

1. Information in this manual is subject to change without notice and does not represent a commitment of manufacturer.
2. Manufacturer shall not be liable for errors contained herein and incidental or consequential damages result from using this manual.
3. No part of the manual can be reproduced or publicized in any form or by any means.
4. All rights are reserved.

### Installing the Software

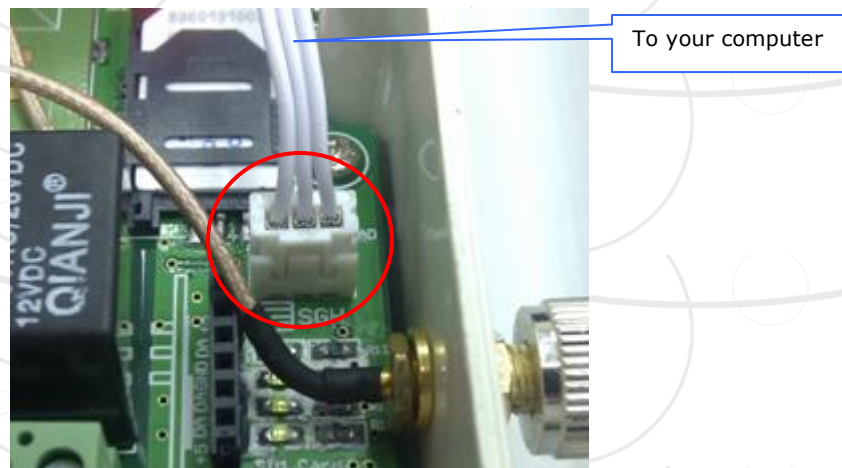
**Step 1:** Insert the provided GSM-SWITCH CD into your computer. You will find a folder named "GSM-SWITCH Programmer".

**Step 2:** Inside this folder you will find "GSM-SWITCH SerialPort Setting" file, you might want to copy this file into your computer. It is an executable program that does not require installation.



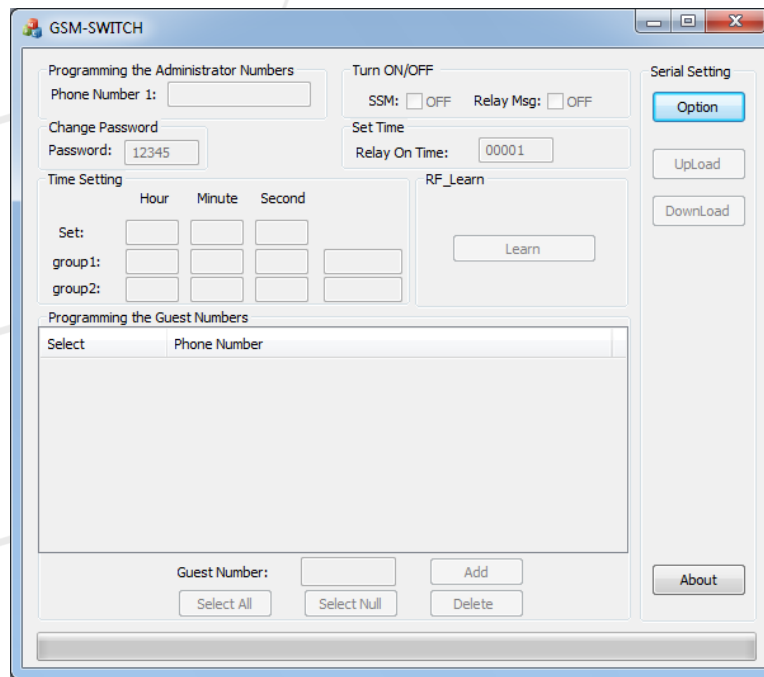
### Connecting the GSM-SWITCH to Your Computer

**Step 3:** Connect the GSM-SWITCH to your computer with the provided serial cable as shown below



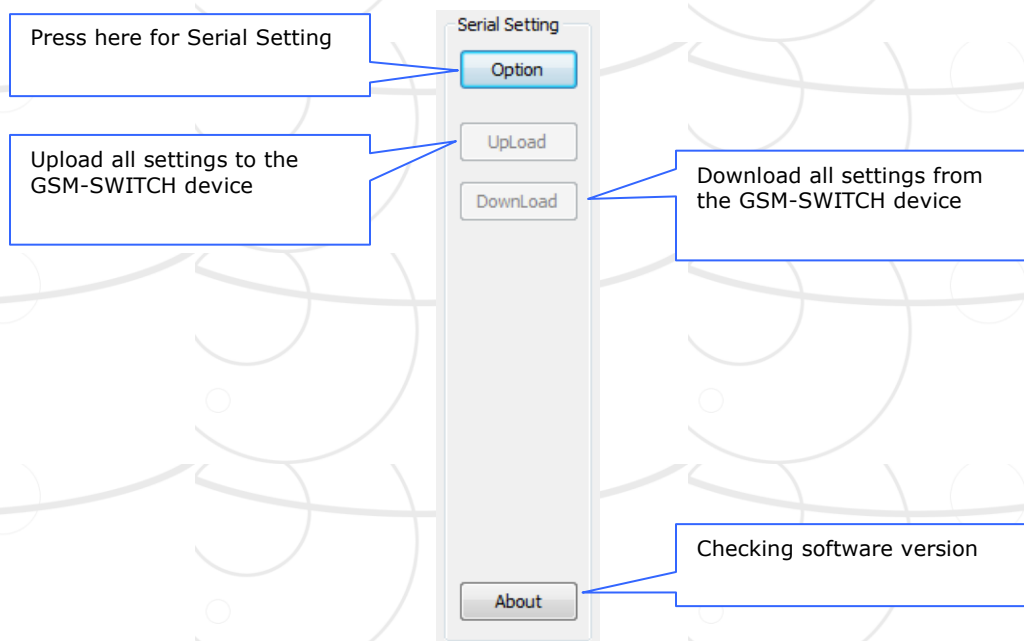
### Launch the Software

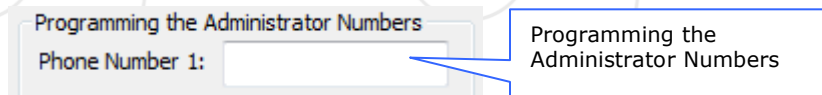
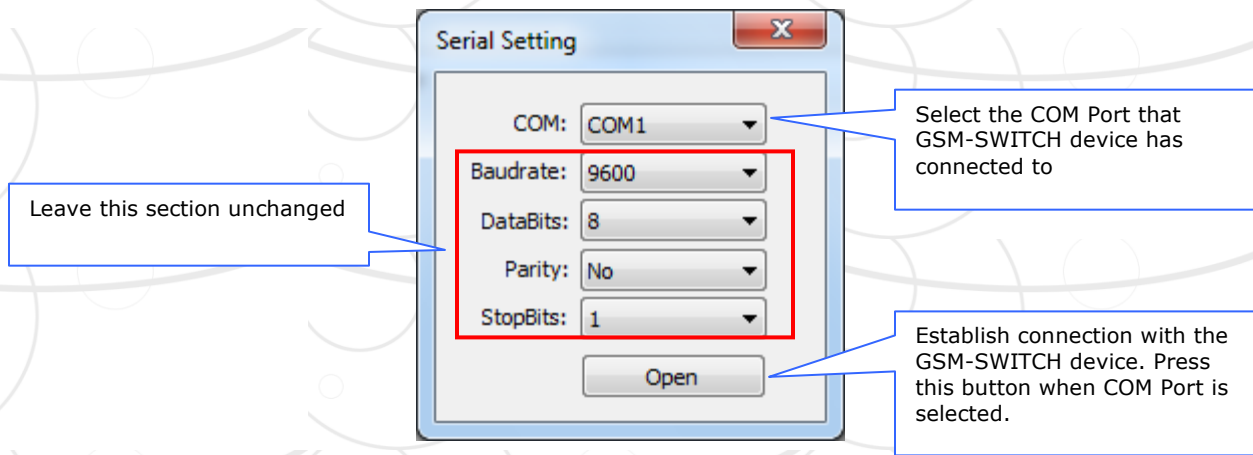
**Step 4:** Double click on the GSM-SWITCH SerialPort Setting.exe to launch the software.



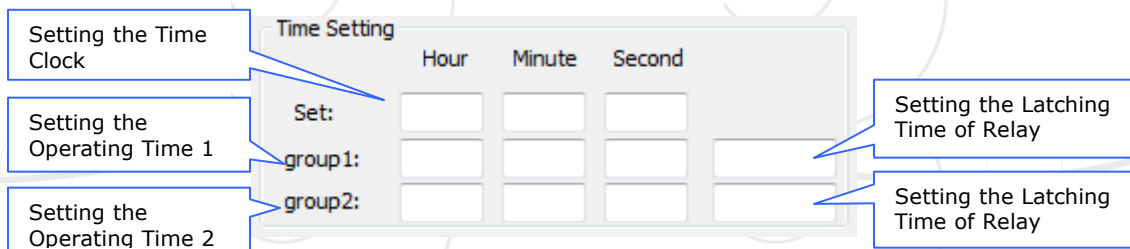
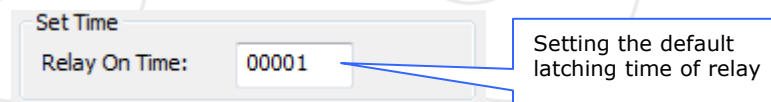
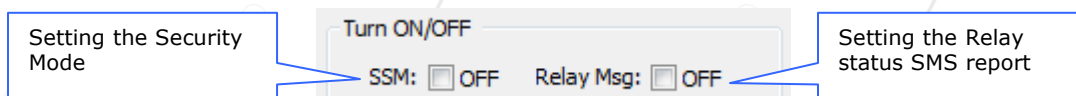
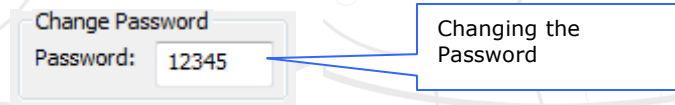
**Note:** Make sure the GSM-Switch device is connected to your PC COM Port with the provided programming serial cable before begin programming.

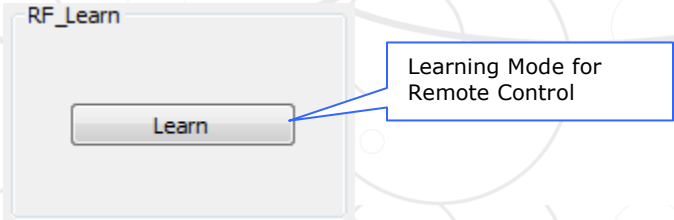
**Step 5:** Understanding the GSM-SWITCH software interface.



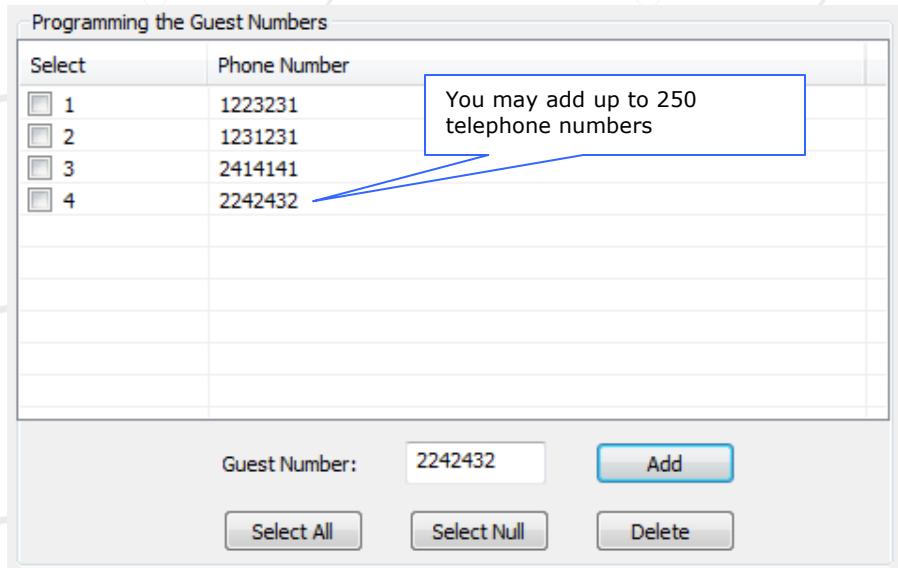
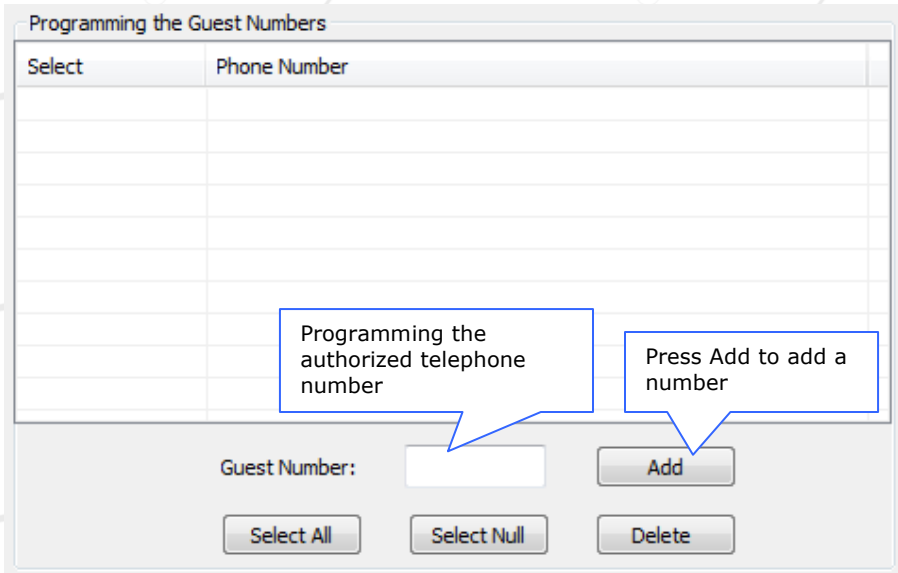


**Note:** It is possible to program up to maximum of 16 digits for the administrator number.





**Note:** Press the Activate or Deactivate relay button on the remote control after pressing the Learn button to program.

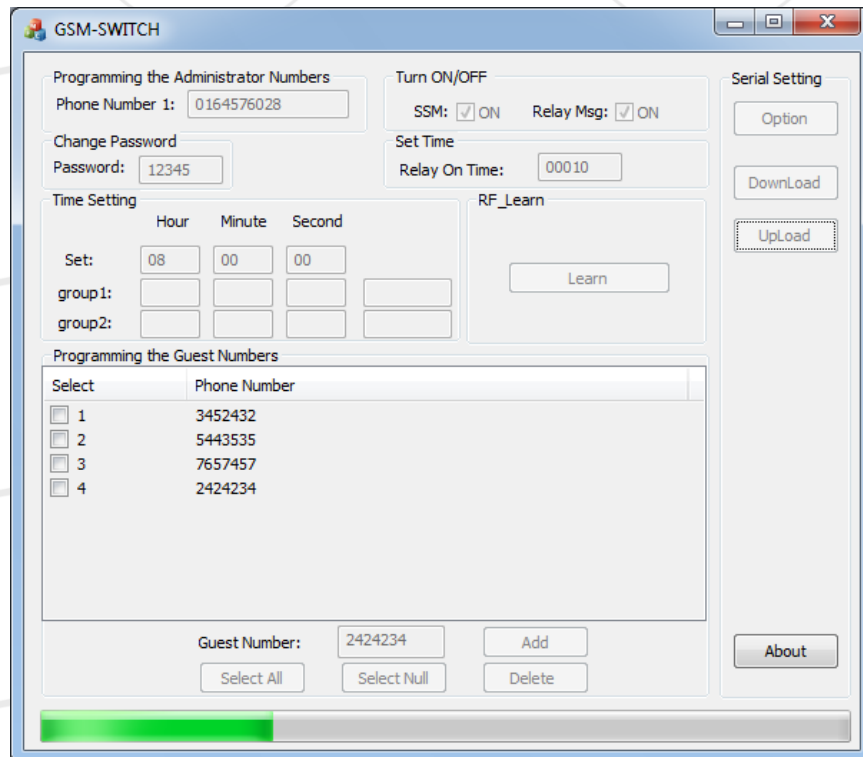
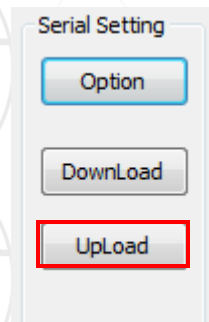


**Note:** All Guest numbers can be programmed into the system using only the last 6 or 7 digits of the telephone number as the system will scan the numbers of the last digits.

## Programming all the Settings into the GSM-SWITCH Device

**Step 6:** Programming all the settings into the GSM-SWITCH device.

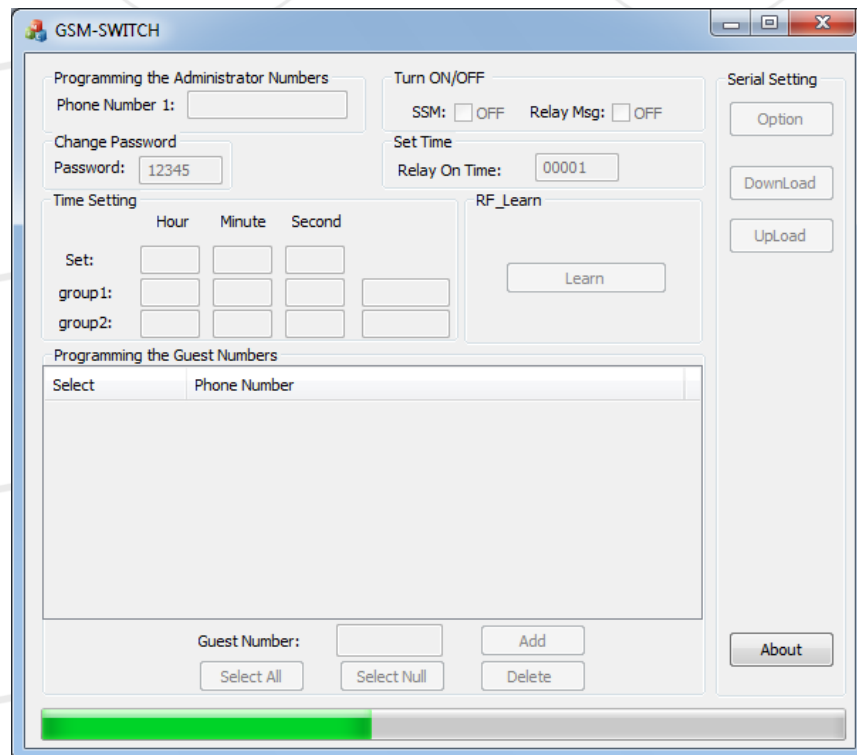
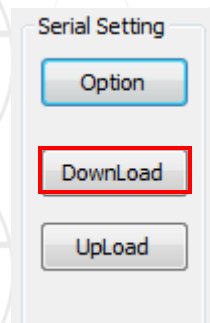
To start programming all the settings, simply press the “Upload” button.



## Download all the Settings from the GSM-SWITCH Device

**Step 7:** Download all the settings from the GSM-SWITCH device.

To download all settings from the GSM-SWITCH device, simply press the "Download" button.



To logout the programmer software, simply click the X button on the top right.

